


Fixed castor EDDF 250 EEK

Extra Heavy Duty Series EDD - Wheel E

 -30 °C - +80 °C


 swivels easily


 wear resistant


 shock proof


 floor protective


 weather proof

Wheel



Tread: Elastic solid rubber tyre, black, 73±5 Shore A, vulcanised on wheel centre

Wheel centre: Die-cast aluminium alloy

Fork

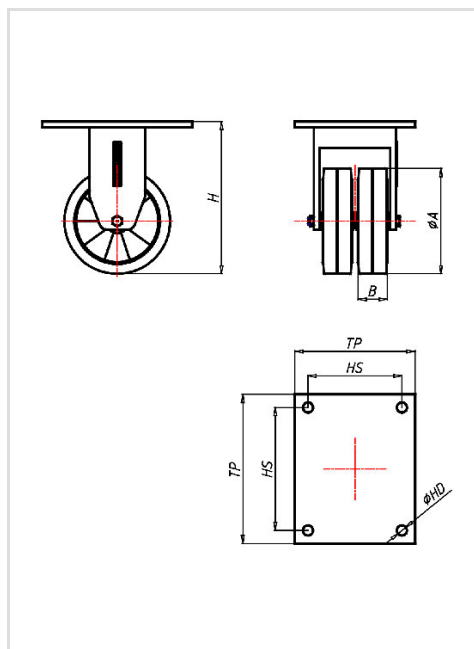


For applications where a super strong and durable caster is required,
 one tapered roller and one axial ball bearing,
 dust protection ring,
 very strong integrated Kingpin,
 locked nut, grease nipple, wheel axle bolted,
 finish – painted

Fixed castor	Wheel-Ø A x width B mm: 250x60+60
Load Capacity kg:	1200
Load capacity tested according to EN 12530 and EN 12527	
Overall height H mm:	323
Dimension of top plate TP mm:	255x205
Hole spacing HS mm:	210x160
Hole-Ø HD mm:	17
Wheel bearing:	Ball bearing

Advantages

- ✓ excellent running performance
- ✓ very silent in motion
- ✓ low rolling resistance
- ✓ good abrasion resistance
- ✓ corrosion resistant
- ✓ non-marking in grey



Applications

- Metal-Technology
- Heavy duty dollies
- Trash container trucks
- Machinery moving dollies
- Workshops
- Racks
- Building-Industry